

# Condulet® Single Gang Device Boxes - Cast Iron or Aluminum

Accessories  
see pages 37–45

## With and Without Mounting Lugs for Threaded Rigid and IMC Conduit

### Applications:

Cast device boxes are installed to:

- Accommodate wiring devices
- Act as pull boxes for conductors in a conduit system
- Provide openings to make splices and taps in conductors
- Provide access to conductors for maintenance and future system changes
- Connect conduit sections
- FSY boxes for mounting surface devices on floor or bench (used with single gang covers)

### Features:

- Internal green ground screw standard on boxes
- Suitable for use in wet locations when used with gasketed covers
- Mounting lugs standard on most boxes
- Tapered threaded hubs (NPT) with integral bushing
- Available for surface mounting (with mounting lugs) or flush mounting (without mounting lugs) as listed
- Available as shallow (FS) or deep (FD) configuration. Use FD if device to be enclosed exceeds 1 5/8" in depth
- Ample wiring room provided in either FS or FD configuration
- Wide selection of surface or flush covers available in three materials (sheet steel, Feraloy®, aluminum)
- Covers for flush mounting extend to conceal the rough plaster line
- Available in single gang and multi-gang configurations with hubs, and as blank bodies for drilled and tapped openings

### Certifications and Compliances:

- UL Standard: 514
- ANSI Standard: C33.84
- Fed. Spec.: W-C-5860
- CSA Standard: C22.2 No. 18

### Standard Materials:

- Feraloy iron alloy or copper-free aluminum.

### Standard Finishes:

- Feraloy – electrogalvanized and aluminum acrylic paint
- Aluminum – natural

### Options:

#### Description

Suffix

#### Finishes:

Corro-free™ epoxy powder coat - external body

S752

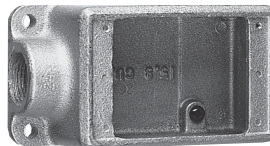
Corro-free™ epoxy powder coat - internal and external  
Hot dipped galvanized

S753  
HDG

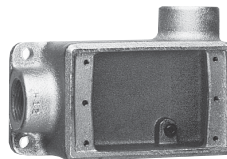
### Size Ranges:

- Hubs – 1/2" to 1"

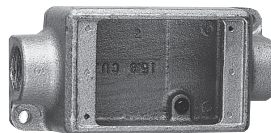
### FS & FD



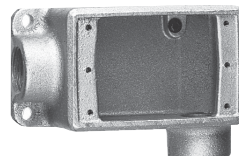
Size	Cat. #	Cat. #
1/2	FS1*	FD1†
3/4	FS2*	FD2†
1	FS3†	FD3†



Size	Cat. #	Cat. #
1/2	FSR1	FDR1
3/4	FSR2	FDR2*†



Size	Cat. #	Cat. #
1/2	FSC1*	FDC1†
3/4	FSC2*	FDC2†
1	FSC3†	FDC3†

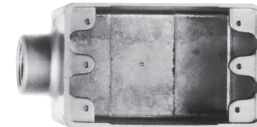


Size	Cat. #	Cat. #
1/2	FSL1	FDL1
3/4	FSL2	FDL2*†

\*Available in sand cast copper-free aluminum – add suffix SCA to Cat. No.

†Available in sand cast copper-free aluminum – add suffix SA to Cat. No.

### Die Cast Aluminum‡



Size	Cat. #	Cat. #
1/2	FS1 SA	FSC1 SA
3/4	FS2 SA	FSC2 SA

‡Mounting lugs and ground screw are not offered with standard die cast aluminum box. For sand cast aluminum box with mounting lugs and ground screw, change "SA" in catalog number to "SCA" (Example: FS1 SCA).

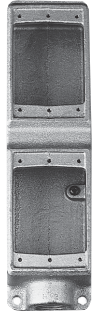
# Condulet® Multi-Gang Device Boxes - Cast Iron or Aluminum

Accessories  
see pages 37-45

2F

With and Without Mounting Lugs for  
Threaded Rigid and IMC Conduit

## FS†



### Two Gang Tandem

Size	Cat. #
1/2	FS17
3/4	FS27

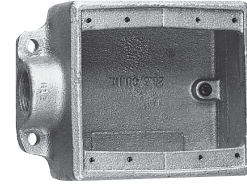
## FSC†



### Two Gang Tandem

Size	Cat. #
1/2	FSC17
3/4	FSC27

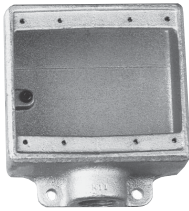
## FSE



### Two Gang

Size	Cat. #
3/4	FSE22

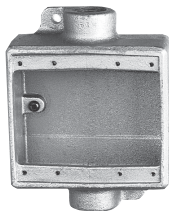
## FS & FD



### Two Gang

Size	Cat. #	Cat. #
1/2	FS12*	FD12
3/4	FS22*	FD22*
1	FS32	FD32

## FSC & FDC



### Two Gang

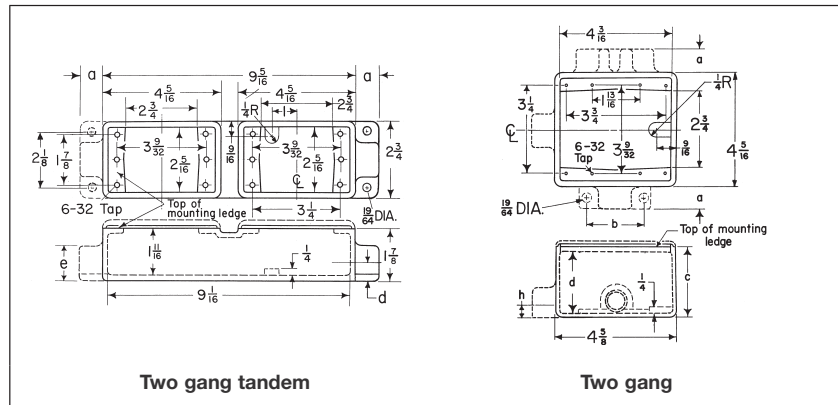
Size	Cat. #	Cat. #
1/2	FSC12	FDC12
3/4	FSC22*	FDC22*
1	FSC32	FDC32

†Use single gang covers only.

\*Available in copper-free aluminum;  
add suffix "SA".

## Dimensions

In Inches:



### Two gang tandem

Series	Hub Size	a	b	e
FS	1/2	7/8	5/8	1 1/4
	3/4	7/8	3/4	1 1/2

### Two gang

Series	Hub Size	a	b	c	d	h
FS	1/2	7/8	2 1/4	1 7/8	1 11/16	5/8
	3/4	7/8	2 1/4	1 7/8	1 11/16	3/4
	1	1	2 1/2	1 7/8	1 11/16	7/8
FD	1/2	7/8	2 1/4	2 11/16	2 1/2	5/8
	3/4	7/8	2 1/4	2 11/16	2 1/2	3/4
	1	1	2 1/2	2 11/16	2 1/2	7/8

2F